

# Surface Water Monitoring – Freshwater, Seawater and Stormwater

Real-time, continuous environmental management and monitoring of surface water (including freshwater, seawater and stormwater) for a wide range of water catchment and industry applications

Adroit is New Zealand's leading real-time environmental monitoring provider for councils, worksites, construction, civil and heavy industries.



## Surface Water Monitoring – Freshwater, Seawater and Stormwater

Adroit provides complete managed environmental monitoring solutions which include equipment, network connection, cloud platform, training, installation, servicing and support. The ability to continuously monitor environmental parameters in real-time for surface water (freshwater, seawater and stormwater) such as nitrates, dissolved oxygen, turbidity, TSS, pH levels, conductivity, temp, water depth, E.coli and blue/green algae provides accurate environmental data. This data can assist in critical decision making and aid in the overall management and sustainability of these environments.

Adroit proudly partners with global IoT technology leaders Libelium, In-Situ, s::can, Proteus and Phathom for environmental monitoring of fresh, sea and stormwater surface water parameters.

Environmental water monitoring gives your team access to real-time data which can be visualised on the Adroit App



Visualise multiple parameters in your water environments from any connected device

### Compliance Reporting

Adroit products provide accurate, cost effective, continuous monitoring to assist with health & safety, complaint mitigation and internal compliance management. Sensors are validated to compliance standards, however for some applications are not suitable for statutory compliance reporting. We recommend discussing your reporting requirements with your Adroit sales lead and where appropriate consulting a compliance specialist.

## Water monitoring key benefits



### Feature rich app

Customisable thresholds and alerts. Downloadable data and available APIs for integration



### Real-time monitoring

Get a clear view of a range of water parameters from your freshwater, seawater or stormwater environments



### Increased productivity and cost-efficiencies

Real-time data aids decision making to maximise efficiencies and minimise environmental impact



### Accurate and reliable measurements

Highly accurate, cost-effective, reliable, field proven and factory calibrated sensors measure various water parameters



### Health and safety

Help ensure a compliant, healthy and safe environment for employees and communities

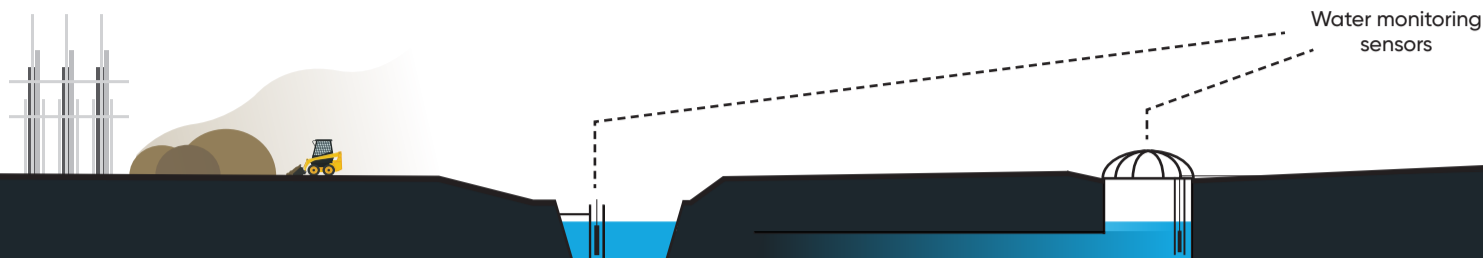
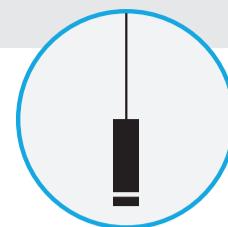
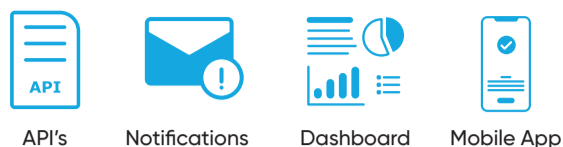


### Compliance and complaint mitigation

Historic and real-time data to aid management of compliance and complaint mitigation



# How it works



## Why monitor surface water?

Real-time monitoring of surface water environments can be key in gaining a clear picture of what is happening at any point in time in the water. Ability to monitor and measure water parameters can aid in the management and sustainability of fragile water catchment areas and ecosystems.



## Real-time water monitoring in the Ōtākaro Avon River

Adroit has installed a real-time sensor network in the Ōtākaro Avon River that will give Christchurch City Council an unmatched insight into the water-quality in this important and historical waterway.

The key benefit the Council is hoping to see from the introduction of Adroit freshwater monitoring is the ability to see pollution events unfold in real-time, and potentially take preventative action. "Longer term as we do more riparian planting and other waterway enhancing initiatives, we can track the efficacy of those intervention methods and see how we're doing in real-time with the health of our rivers."

**MICHAEL HEALY**  
SMART CHRISTCHURCH MANAGER, CHRISTCHURCH CITY COUNCIL

## Surface water monitoring applications

### Seawater

Environments such as ports, marinas, wharfs, beaches and a wide variety of marine industry applications.

### Freshwater

Environments such as rivers, streams, lakes and water catchment areas.



### Stormwater

Environments including urban and rural areas, construction and worksites, and a wide variety of heavy industrial applications.

## Build a sustainable future with technology and expertise

Spark IoT is proud to bring the expertise of Adroit to our customers across the public sector, worksites, construction, civil and heavy industries.

Help your business prepare for the future with Spark IoT, contact your Spark Client Lead or [iotsales@spark.co.nz](mailto:iotsales@spark.co.nz) to find out more.

