

Specifications

- Battery life minimum 10 days from fully charged
- Rugged casing IP67 waterproof
- Charging from AC mains power (can also be mains powered)
- Vibration sensor measures Peak Particle Velocity in x y z directions
- Dimensions 414 x 345 x 129 mm
- Weight 5.5kg
- Operational temperature range -10°C to 50°C
- Voltage range 4V - 5V 2A
- Sensor measures Vibration continuously and transmits data to the Adroit Platform every 15 minutes
- Mount via 5/8" tripod connection (tripod not included) or optional wall mount bracket
- Suitable usage for all construction, civil, worksites and heavy industry
- Automatic wireless connection via the Spark Cat-M1 network

Troubleshoot

Do's & Dont's

- Do not open the vibration sensor
- Do not use 3rd party power supplies to charge this device, failure to use an Adroit approved charger may result in damage to the kit.
- Do not unscrew and open panel inside the enclosure this will result in voiding warranty.
- Do not use the USB port for charging or charging external device
- Turn off the device when relocating or moving
- The device uses sensitive sensor equipment handle with care
- Ensure the vibration sensor is stowed inside rugged case while relocating

Trouble Shooting

- If device is not turning on, check battery percentage on the Adroit Platform
- If data is not coming to the Adroit Platform, check charge status
- If charge status is off, please recharge the battery
- If Adroit Platform widgets are grey, please relocate the device as it may have poor network connectivity
- Check internal temp is within operating range of -10°C to 50°C
- To clean the device use a damp cloth to wipe any dirt residue. Do not rinse with hose or tap.

Warranty & Support

The Adroit Portable Monitoring Kit equipment includes a 24 month return to base warranty effective from shipment date to client.

The Adroit Portable Monitoring Kit monthly plan includes Adroit support covering the equipment, network and platform services.

Adroit support is available by phone, email and web portal, during the hours of 9am to 5pm, Monday to Friday (excluding public holidays).

Adroit will use all reasonable means to resolve support issues in a timely manner, and may require the client to perform on-site troubleshooting such as power restarts.

Adroit Vibration Monitoring Kit

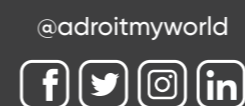
PMK

VIBRATION
PORTABLE MONITORING KIT

User Guide



For sales and support please contact the Adroit team.
E: service@adroit.nz P: +64 9 666 8889 W: www.adroit.nz



5 Wilkins Street
Freemans Bay, 1011
Auckland, NZ

hello@adroit.nz
+64 9 666 8889
www.adroit.nz


adroit
Environmental IoT

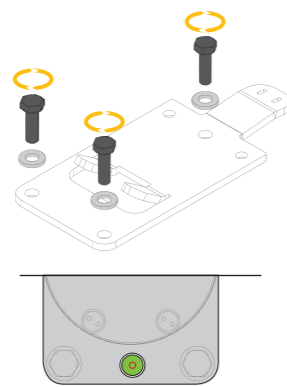
Quick Setup

Step 1

Mount base plate

Screw base plate to concrete surface.

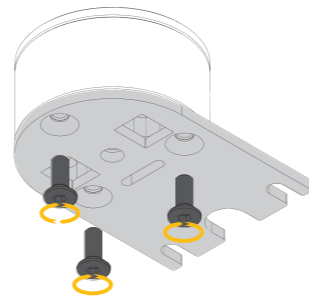
Ensure base plate is level in all directions using the built in level.



Step 2

Install vibration sensor plate

Screw the quick release plate to the underneath of the vibration sensor.

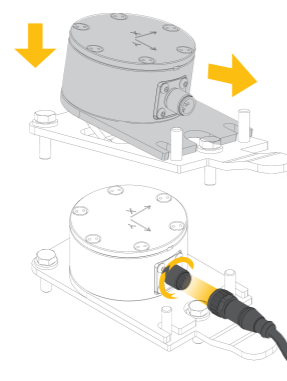


Step 3

Install & connect sensor

Slide vibration sensor onto the base plate.

Connect twist-lock cable to sensor ensure a tight fit.

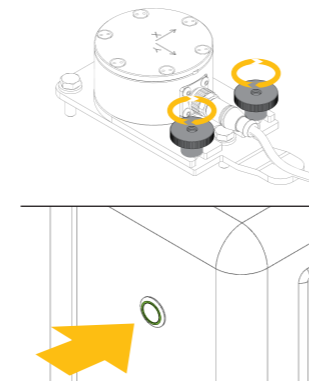


Step 4

Securing & turning On/Off

Tighten firmly using the thumb screws.

Turning On, press button on left side of enclosure until clicks in. Green flashing light indicates unit operating.



General Operation

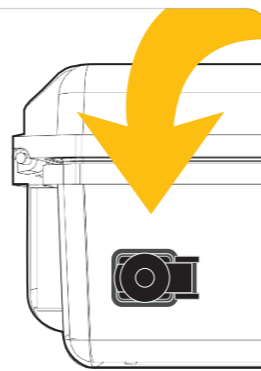
Signal states

Constant on		Reading
Slow blink		Uploading
Pulse blink x 1		Battery low
Pulse blink x 3		Device error
Blink every 5s		Idle

Charging

Locate the charging port on the side of the unit. Plug in the Adroit twist lock power supply provided inside the case.

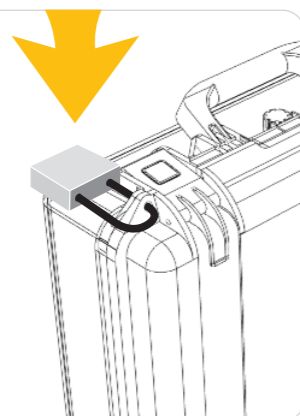
A green light will illuminate to signify the device is charging.



Locking

When site security is a concern use a padlock through the holes provided in the enclosure.

When wall mounting ensure the enclosure is secured to the wall you are mounting to.



Transportation

Ensure diffuser is stored inside enclosure and device is powered off while transporting.

Kit contains sensitive electronic equipment handle with care.



adroit platform



Ready to go pre-configured dashboards



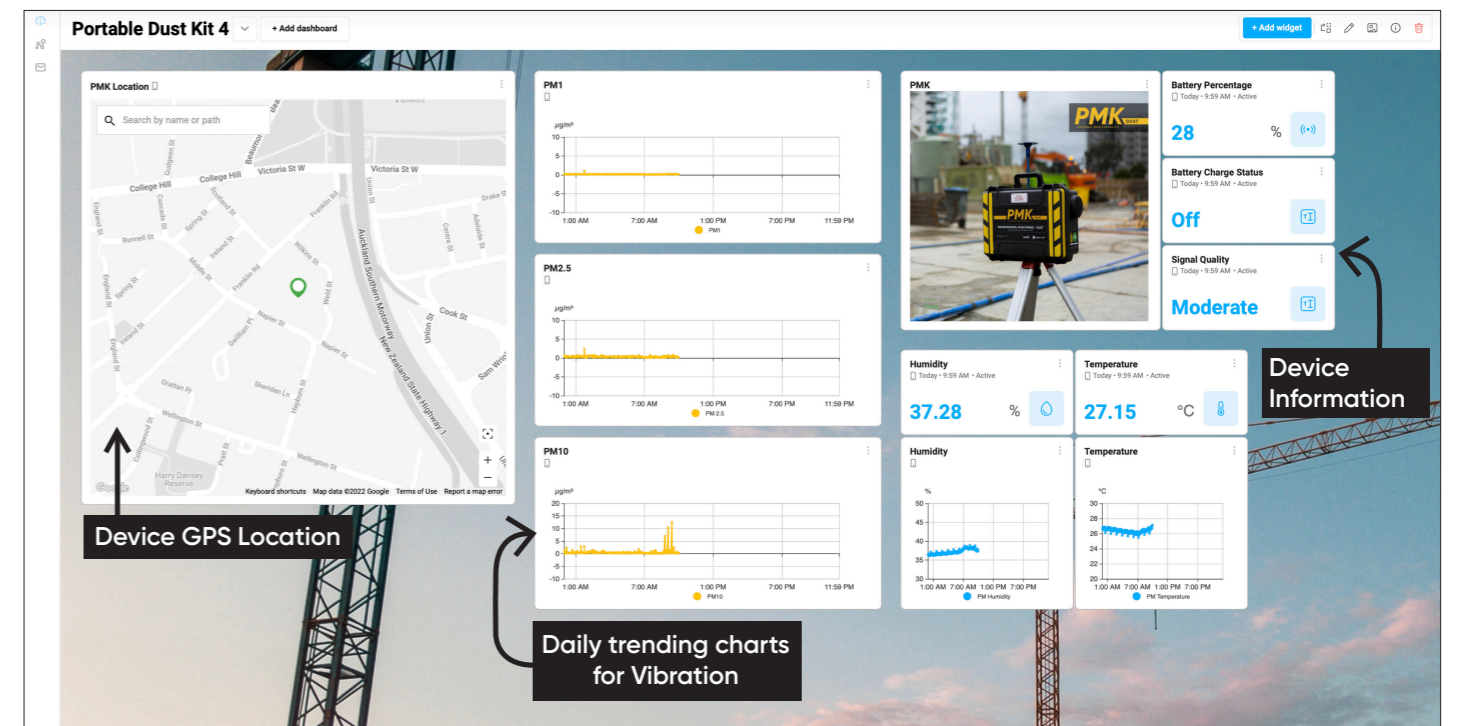
Set custom thresholds



Set custom alerts to notify users



App available for download on any mobile device



Dashboards

Create widgets and customise how you visualise data.



Charts

Create charts to view historic data over days, weeks, months or a specific data range



Notifications

View platform alerts from threshold breaches

Access the Adroit Platform

To visualise your data scan the QR code on the side of the dust monitor or below to access the Adroit Platform login screen.



Resources

Building types



Historic (3mm/s)

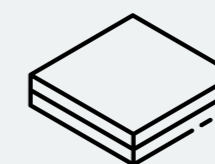


Residential (5mm/s)

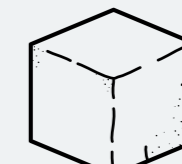


Commercial (20mm/s)

Mounting options



Concrete slab



Deadmans block



Ground screw